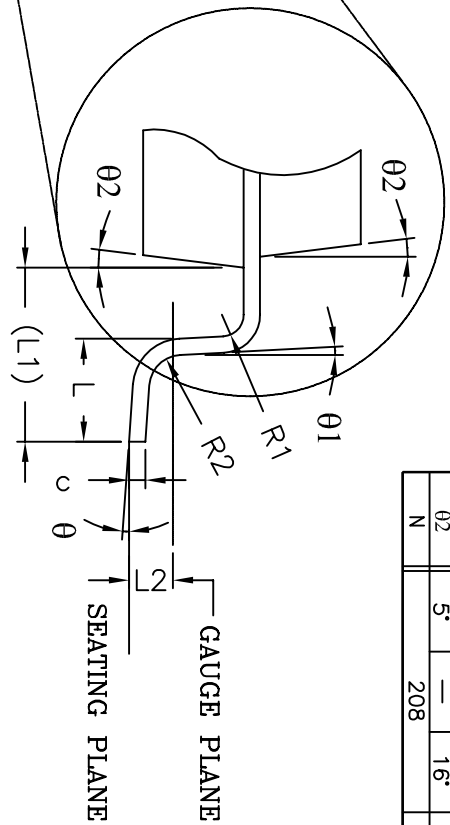
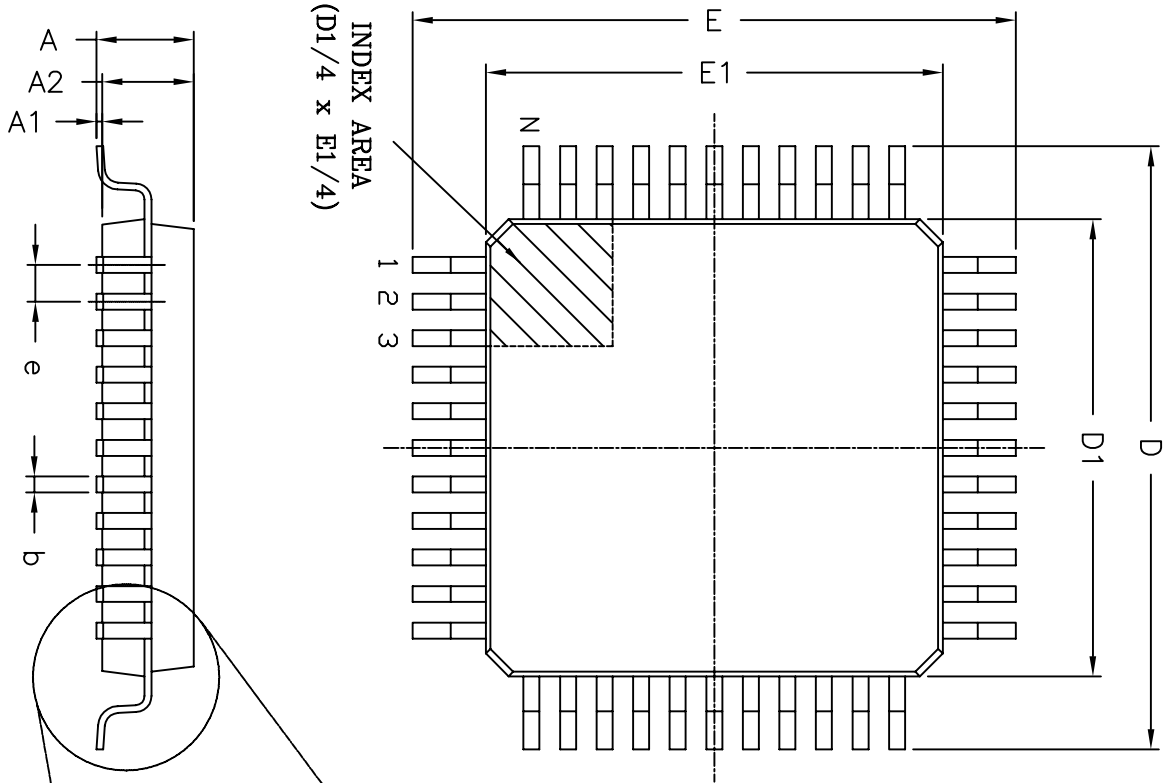


REVISION HISTORY

REV.	DISCRIPTION	DATE	APP'D
A	DRAWING ORIGINATION	02/11/09	PC

208 Pin MQFP JEDEC MS-029 Variation FA-1						
SYMBOLS	DIMENSIONS IN MM (Control Unit)			DIMENSIONS IN INCH (Reference Unit)		
	MIN	NOM	MAX	MIN	NOM	MAX
A	—	—	4.10	—	—	0.161
A1	0.25	—	0.50	0.010	—	0.020
A2	3.20	3.40	3.60	0.126	0.134	0.142
b	0.17	—	0.27	0.007	—	0.011
c	0.09	—	0.20	0.004	—	0.008
D	—	30.60 BSC	—	—	1.205 BSC	—
D1	—	28.00 BSC	—	—	1.102 BSC	—
E	—	30.60 BSC	—	—	1.205 BSC	—
E1	—	28.00 BSC	—	—	1.102 BSC	—
e	—	0.50 BSC	—	—	0.020 BSC	—
L	0.45	0.60	0.75	0.018	0.024	0.030
L1	—	1.30 REF	—	—	0.051 REF	—
L2	—	0.25 BSC	—	—	0.010 BSC	—
R1	0.08	—	—	0.003	—	—
R2	0.08	—	0.25	0.003	—	0.010
θ	0°	3.5°	8°	0°	3.5°	8°
θ1	0°	—	—	0°	—	—
θ2	5°	—	16°	5°	—	16°
N	—	208	—	—	208	—



EXAR CORPORATION
Powering Connectivity

208 PIN MQFP PACKAGE OUTLINE

Packaging Approval: _____ Drawing No: 208-PIN MQFP

By: PC Date: 02/11/09 Revision: A Sheet: 1 OF 1