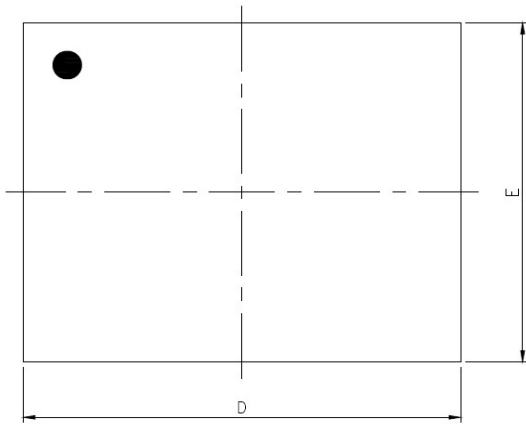
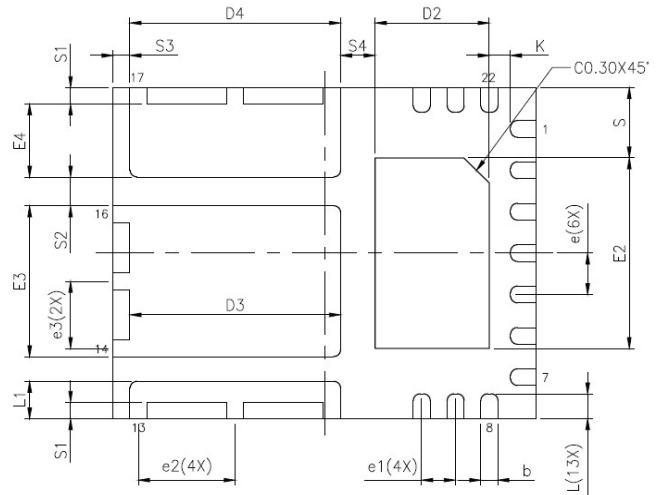


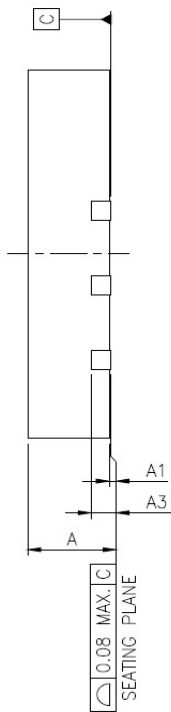
Part Number	Package Size	Subcon Reference Doc & Rev
MXL76125	22 FCQFN (5.0 x 4.0 x 0.85mm)	Greatek RT-20220217-01 Rev A



Top View



Bottom View



Side View

JEDEC OUTLINE	N/A		
PKG CODE	VQFN		
SYMBOLS	MIN	NOM	MAX
A	0.80	0.85	0.90
A1	0.00	0.02	0.05
A3	0.203 REF		
b	0.15	0.20	0.25
D	4.90	5.00	5.10
E	3.90	4.00	4.10
e	0.50 BSC		
e1	0.40 BSC		
e2	1.145 BSC		
e3	0.81 BSC		
D2	1.30	1.35	1.40
D3	2.44	2.49	2.54
D4	2.44	2.49	2.54
E2	2.25	2.30	2.35
E3	1.77	1.82	1.87
E4	0.83	0.88	0.93
L	0.25	0.30	0.35
L1	0.40	0.45	0.50
K	0.20	-	-
S	0.85 REF		
S1	0.20 REF		
S2	0.35 REF		
S3	0.20 REF		
S4	0.41 REF		

LEAD FINISH		JEDEC CODE
Pure Tin	PPF	
V	X	N/A

NOTE:

1. All dimensions are in millimeters
2. Dimension b applies to metallized terminal and is measured between 0.15mm and 0.30mm from the terminal tip. If the terminal has the optional radius on the other end of the terminal, the dimension b should not be measured in that radius area.
3. Bilateral coplanarity zone applies to the exposed heat sink slug as well as the terminals.

